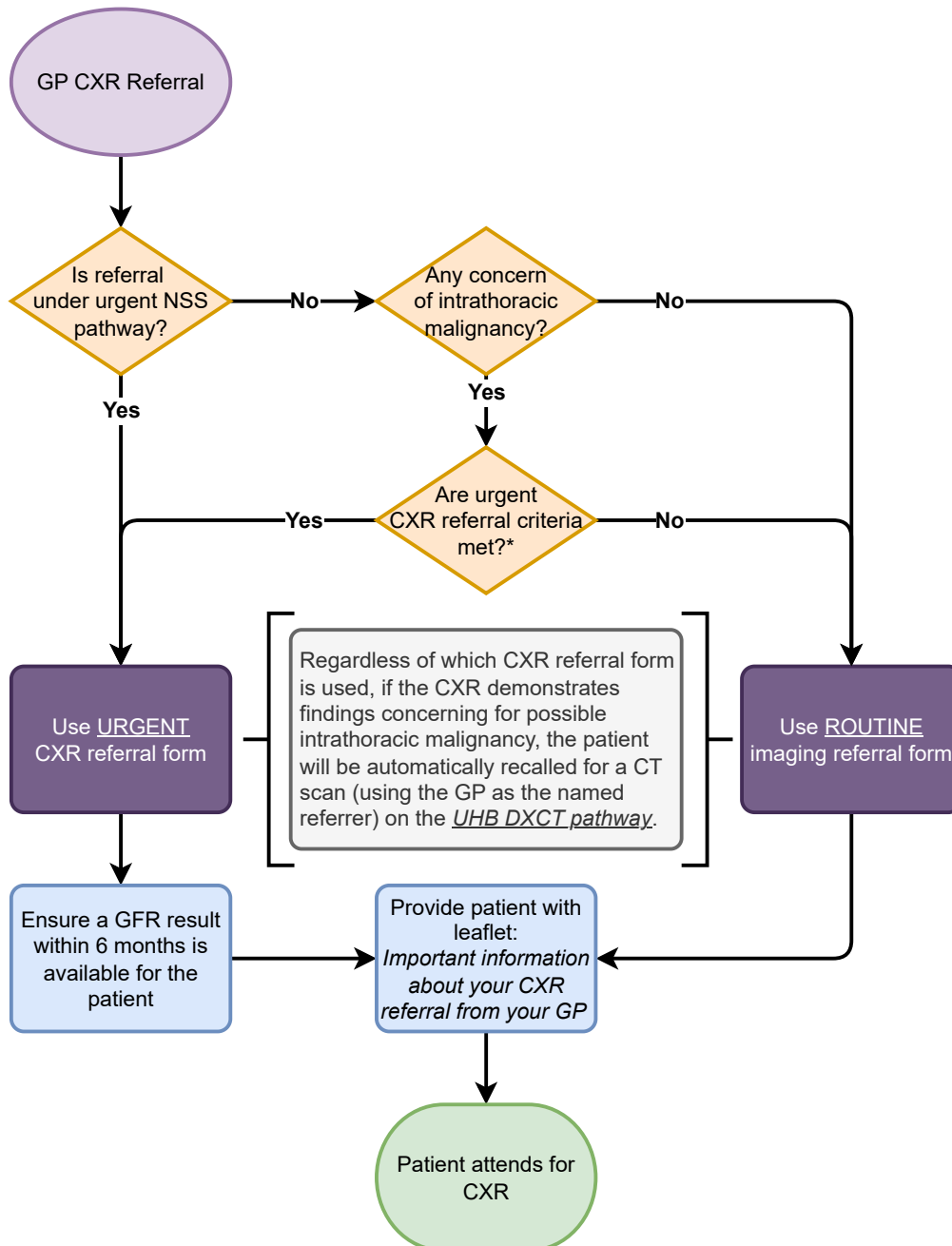


### GP CXR referrals to UHB



**\*Urgent CXR referral criteria for intrathoracic malignancy.**

If there is a history of active/previous/passive smoking or prior asbestos exposure, one of the below is required:  
If there is no history of smoking or asbestos exposure, two of the below are required:

- Cough (unexplained) > 4-6 weeks
- Chest pain (unexplained) > 4-6 weeks
- Shortness of breath (unexplained) > 4-6 weeks
- Weight loss, > 4-6 weeks - 5-10% of body weight
- Appetite loss > 4-6 weeks
- Fatigue > 4-6 weeks
- Unexplained haemoptysis